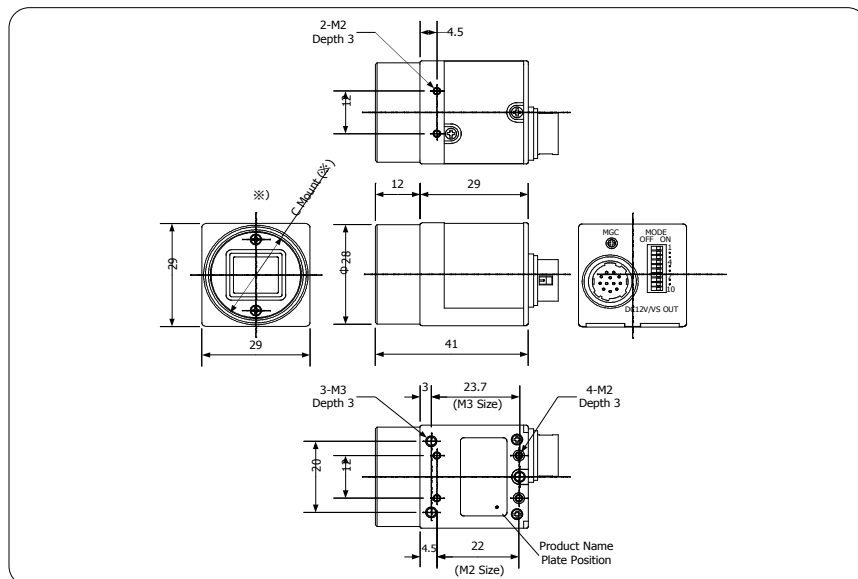


EIA ANALOG
MONOCHROME



29mm ²	B&W	ANALOG VS	EXT TRIGGER	PULSE TRIGGER
-------------------	-----	-----------	-------------	---------------

UP TO EIA RESOLUTION AND 33.33 MS IN A COMPACT CHASSIS



SPECIFICATIONS

RESOLUTION	EIA
SENSOR TYPE	1/2" SONY ICX 418ALL CCD
POWER CONSUMPTION	2.1W
INPUT VOLTAGE	DC+12V ±10% (Max 15V)
OPERATING CONDITIONS	0°C ~40°C @ 20~80% HUMIDITY
WEIGHT	44g
LENS MOUNT	C MOUNT
OPTICAL AXIS ACCURACY	Less than (Pixel Center) ±0.1mm
VIDEO OUTPUT SIGNAL	VS Output 1Vp-p (negative sync)
NUMBER OF EFFECTIVE PIXELS	768(H)×494(V)
HORIZONTAL SCAN FREQUENCY	31.468KHz/16.734KHz
PIXEL CLOCK	28.636MHz/14.318MHz
PIXEL SIZE	8.4×9.8(μm)
MINIMUM ILLUMINATION	F1.4 @ 0.5(lx)
SENSITIVITY	F11 @ 400lx
STANDARD COLOR TEMPERATURE	3200°K
GAIN	Manual 0 - 12dB
ELECTRONIC SHUTTER	OFF~1/20000 sec./OFF ~ 1/10000 sec.
SYNC. METHOD	Internal Sync. External Sync. HD/VD
EXTERNAL TRIGGER	Fixed Shutter Exposure/Pulse Width Exposure/Restart/Reset
PARTIAL SCAN	N/A
GAMMA COMPENSATION	DEFAULT OFF (OPTIONAL 0.45)
CONTROL INTERFACE	N/A