

Canon

VB-C300

WIDE ANGLE PTZ NETWORK CAMERA



Interlaced scan

Progressive Scan
(VB-C300)

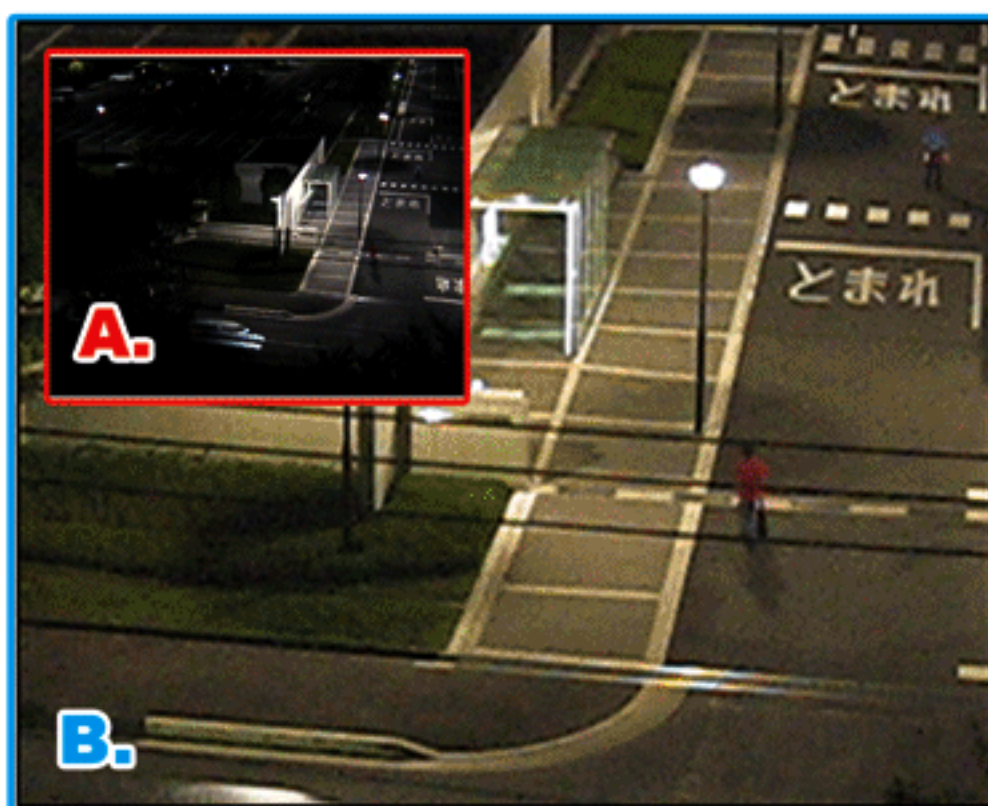


VB-C300 can be used upright, on the ceiling, or in an optional ultra-compact ceiling dome.

Domes are available in smoke and clear. Domes sold are separately.



VB-C300 wide angle lens compared to the VB-C50i zoom lens.



A. Low-light video in black and white

B. 30fps captured video with as little as 1 lux of illumination.

Wide Angle Lens:

- The new VB-C300 features a genuine Canon auto focus lens boosting a wide 70° horizontal angle of view with a 360° viewing angle.

- Ultra-wide coverage with remote control pan / tilt / zoom. (Pan: ±170°, Tilt: -25° / +90°, +25° / -90° (Reverse Mode), and 2.4x Optical Zoom).

- Stylish, extremely compact with an unobtrusive design.

Auto Day & Night Mode:

- Auto Day & Night Mode allows the VB-C300 to automatically switch from color video capture in daylight conditions to light sensitive black & white video capture in dark conditions.

- The VB-C300 offers excellent low-light performance able to capture 30fps color video with as little as 1 lux of illumination without reducing frame rate.

- Images are clear and noise free thanks to a high sensitivity CCD.

Auto Focus:

- Objects in the foreground and background are in focus during panning, tilting, or zooming.

PoE (Power over Ethernet):

- 802.3af Compliant.
- Receive both data and power through a single Ethernet cable.

Two-way Audio:

- Simultaneous two-way audio. Speak and listen at the same time.

Networking:

- Built-in Network Server provides viewing up to 15 clients simultaneously.
- Built-in terminals for connection to external devices.

Video:

- Smooth, high-quality, progressive scan video for clear images of even fast moving subjects.





VB-C300

WIDE ANGLE PTZ NETWORK CAMERA

PRODUCT CODE	VB-C300
ITEM CODE	1867B002AA
UPC CODE	013803078046

SPECIFICATIONS	
Video Signal	Conforms to NTSC
Image Sensor	1/4-inch CCD (primary color filter)
Number of Pixels	NTSC use: 340,000 (effective 680,000)
Scanning Method	Progressive Scan
Min. Subject Illumination	Day Mode: 1 Lux (F2.0, color, 1/30 sec.) Night Mode: 0.25 lux (F2.0, monochrome, 1/30 sec.) When using the Indoor Dome Housing (Optional) VB-RD41S-S (smoked) Day Mode: 2 Lux (F2.0, color, 1/30 sec.) Night Mode: 2 lux (F2.0, monochrome, 1/30 sec.)
Imaging Modes	Day mode/Night mode
Focusing	Day mode: 0.3m (11.8 in) / Night mode: 0.6m (23.6 in) for Auto/Manual focusing at wide/telephoto ends
Aperture	Auto iris servo system
Lens	f= 3.0 to 7.2mm / F2.0 to 3.4 / 2.4 x power zoom (shooting at infinity)
Viewing Angle	Horizontal= 70.8° (W) to 29.6° (t) Vertical= 51.6° (W) to 22.1° (t) *including distortion
Pan Angle Range	340° (±170°)
Tilt Angle Range	Upright position= 115° (-25° to 90°) Inverted=115° (-90° to 25°)
Moving Rate	Pan= Max. 90° / sec. Tilt+ Max. 70° / sec.
Infrared Cut Filter	Power-driven insertion/removal (Day mode/Night mode)
White Balance	TTL method: Auto / Manual preset / One-shot
Protocols	HTTP, DHCP, WV-HTTP (from Canon)
Video Compression Method	Motion-JPEG compression (movie) JPEG (still image)
Video Compression Rate	NTSC: 0.1fps-30fps
Audio Compression Method	G.711μ-law(64kbps) full duplex
Output Video Size	160 x 120, 320 x 240, 640 x 480
Camera Control	Pan, tilt, zoom, brightness, shutter speed, focus speed, white balance
Connection Controls	Access Control (with password), number of concurrent connections (max. 15)
Main Unit Interface	Network: LAN x 1 (RJ45, 100Base-TX/10Base-T auto-negotiation) AUDIO IN/OUT: Ø3.5 monaural. mini-jack IN: Connection to a microphone with amp and LINE output x 1 OUT: Connection to a speaker with amp x 1 VIDEO OUT: Ø3.5 monaural. mini-jack Video composite signal output from network camera (for maintenance) x 1 External Device I/O: Input x 2, Output x 1
Dimensions	Approx. 47.9 in (H) x 51.9 in (W) x 51.1 in (D) (Main unit only, excluding rubber feet and ceiling bracket)
Weight	Approx. 1.7 lb Approx. 2.15 lb *For ceiling mount (including ceiling bracket and ceiling mount cover)
Operating Environment	Temperature -10-45°C, humidity 20-85% RH (condensation free)
Power	Capable of PoE power supply via LAN connector (in accordance with IEEE802.3af compliant) 24VAC /12VDC, (using the Supplied Connector, *no polarity) AC adapter for 100VAC to 240 VAC (PA-V17)
Power consumption	Max: Approx. 10W (PoE) Max: Approx. 13W (AC adapter)

AC ADAPTER (optional)	
Model	PA-V17
Input	100-240 VAC 50/60 Hz
Output	13 VDC 1.8 A (max.) Temperature: -10°C to 35°C, Humidity: 20 to 85%RH (condensation free) When using the network camera 13 VDC 1.0 A (max.) Temperature: -10°C to 45°C, Humidity: 20 to 85%RH (condensation free)
Polarity	Exterior (-) Interior (+)
Dimensions	58 x 188 x 25mm (2.28 x 4.65 x 0.98 in.) (W x D x H) (Excluding attachments)
Weight	Approx. 0.474 lb (excluding cables)
INDOOR DOME HOUSING (optional)	
Model	VB-RD41S-C / VB-RD41S-S
Type	Clear / Smoke type
Using environment in combination with the camera	Temperature 0-45°C, humidity 20-85% RH (condensation free)
Dimensions	7.09 in (4.43 in: dome) x 3.21 in (H) *Including ceiling portion: 5.77 in (H)
Weight	Approx. 0.820 lb (Excluding the VB-C300)

CONTENTS OF KIT:	
VB-C300, Ceiling Bracket, Ceiling Mount Cover, Screws x4, Safety Wire, Power Connector, CD-ROM, Rubber Feet, Template, Users Manual	

OPTIONAL SOFTWARE:	
Item Code:	Description:
9513A028	VK-64 Software Ver 1.3
9513A029	VK-16 Software Ver 1.3
9513A030	VK-Viewer (1) License
9513A031	VK-Viewer (5) Licenses

OPTIONAL ACCESSORIES:	
Item Code:	Description:
2112B001AA	(VB-RD41S-S) Indoor dome housing smoke
2112B004AA	(VB-RD41S-C) Indoor dome housing clear
2245B001AA	PA-V17 AC Adapter

PACKAGING INFORMATION:		
	W x D x H	Weight
	7.87 x 8.54 x 8.47 in (200 x 217 x 215mm)	3.53 lbs 1.6kg



1-800-OK-CANON
www.usa.canon.com

Canon U.S.A., Inc.
One Canon Plaza
Lake Success, NY 11042 U.S.A.

Canon Canada, Inc.
6390 Dixie Road
Mississauga, Ontario L5T 1P7 Canada

Canon Mexicana, S. de R.L. de C.V.
Blvd. Manuel Ávila Camacho
No. 138, Piso 17
Col. Lomas de Chapultepec
C.P. 11000 México, D.F. México

Specifications are subject to change without notice. Weight and dimensions are approximate. Canon and IMAGEANYWARE are registered trademarks of Canon Inc. in the United States and may also be registered marks in other countries. Microsoft and Windows are either registered trademarks or trademarks of the Microsoft Corporation in the United States and/or other countries. Other names and products not mentioned above may be registered trademarks or trademarks of their respective companies. Errors and omissions excepted. Weight and dimensions are approximate. Specifications subject to change without notice. Images simulated
Warning: Unauthorized recording of copyrighted materials may infringe on the rights of copyright owners and be contrary to copyright laws