

BRACKETS - Steel Bracket WM800 / Dual Bracket WM2400



DESCRIPTION

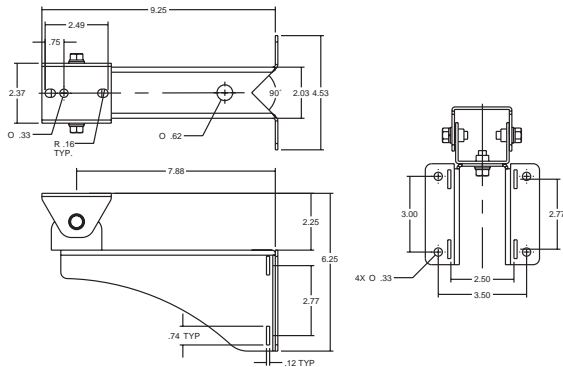
The WM800 is a medium-duty mount designed for the ACH13 and many other manufacturers' housings. A black, textured powdercoat finish adds a decorative look to the mount. The WM800 is designed to support weight loads up to 25 lbs (9 kg).

FEATURES

- Designed for mounting to a flat wall or round pole (larger than 3.5" diameter)
- 12-gauge steel
- Black, textured powdercoat finish

ARCHITECTURAL/ENGINEERING SPECIFICATIONS

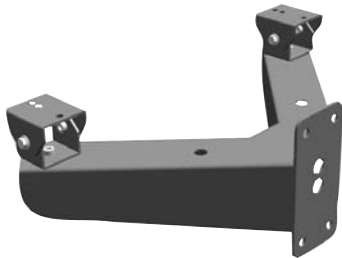
The medium-duty indoor/outdoor wall/pole mount bracket shall be a Videolarm WM800 or equivalent. The bracket shall be designed for mounting to a flat wall, or to a round pole with a diameter larger than 3.5". The bracket shall be designed for use with Videolarm's ACH13 camera housing. Construction material shall be 12-gauge steel and a black, textured powdercoat finish shall be included. The bracket shall support a load weight of 25 lbs (9 kg). Dimensions shall not exceed 6.25" H x 4.5" W x 10.75" D. The bracket's weight shall not exceed 3 lbs.



SHIPPING SPECIFICATIONS

Model	Unit Weight	Shipping Weight	Shipping Box Dim.
WM800	3 lb	3 Grd/3 Air	12 x 6 x 8

* Shipping weights depend on box dimensions.



DESCRIPTION

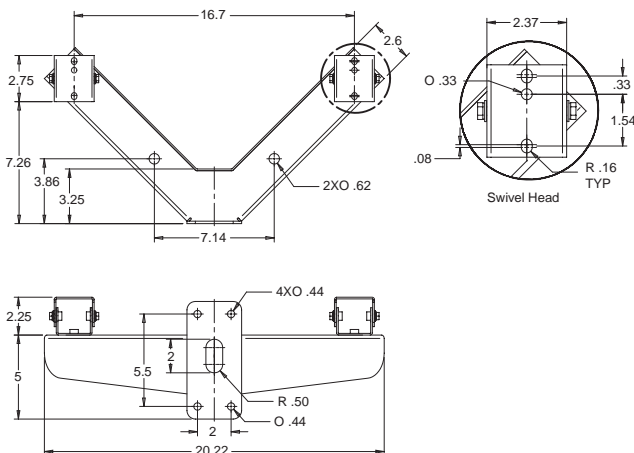
The WM2400 is a medium-duty dual mount designed for the ACH13. A black, textured powdercoat finish adds a decorative look to the mount. The WM2400 is designed to support weight loads up to 30 lbs.

FEATURES

- Mounts easily to wall and also the PolEvator™
- Swivel head adapters can be rotated independently
- Black, textured powdercoat finish

ARCHITECTURAL/ENGINEERING SPECIFICATIONS

The medium-duty indoor/outdoor wall/pole mount bracket shall be a Videolarm WM2400 or equivalent. The bracket shall be designed for mounting to a flat wall. The bracket shall be designed for use with Videolarm's ACH13 camera housing. The bracket shall support a load weight of 40 lbs.



SHIPPING SPECIFICATIONS

Model	Unit Weight	Shipping Weight	Shipping Box Dim.
WM2400	Check with manufacturer		

* Shipping weights depend on box dimensions.